



Dear Member,

To reduce the frustration sometimes associated with winter parking, Pineloch Sun (PLS) is issuing parking permits to be used to park in PLS parking areas. In order to receive your parking permit or park on PLS property, you must be a "member in good standing" as described in the PLS bylaws, Article III section 4.

Your permit must be displayed in your vehicle to utilize PLS parking areas, which include:

- Lodge – in front of the tennis court
- Middle triangle lot – between SR903 and the lodge, north end only
- Tom Write Road lot– along the upper south side of Tom Write Road (see website for maps)

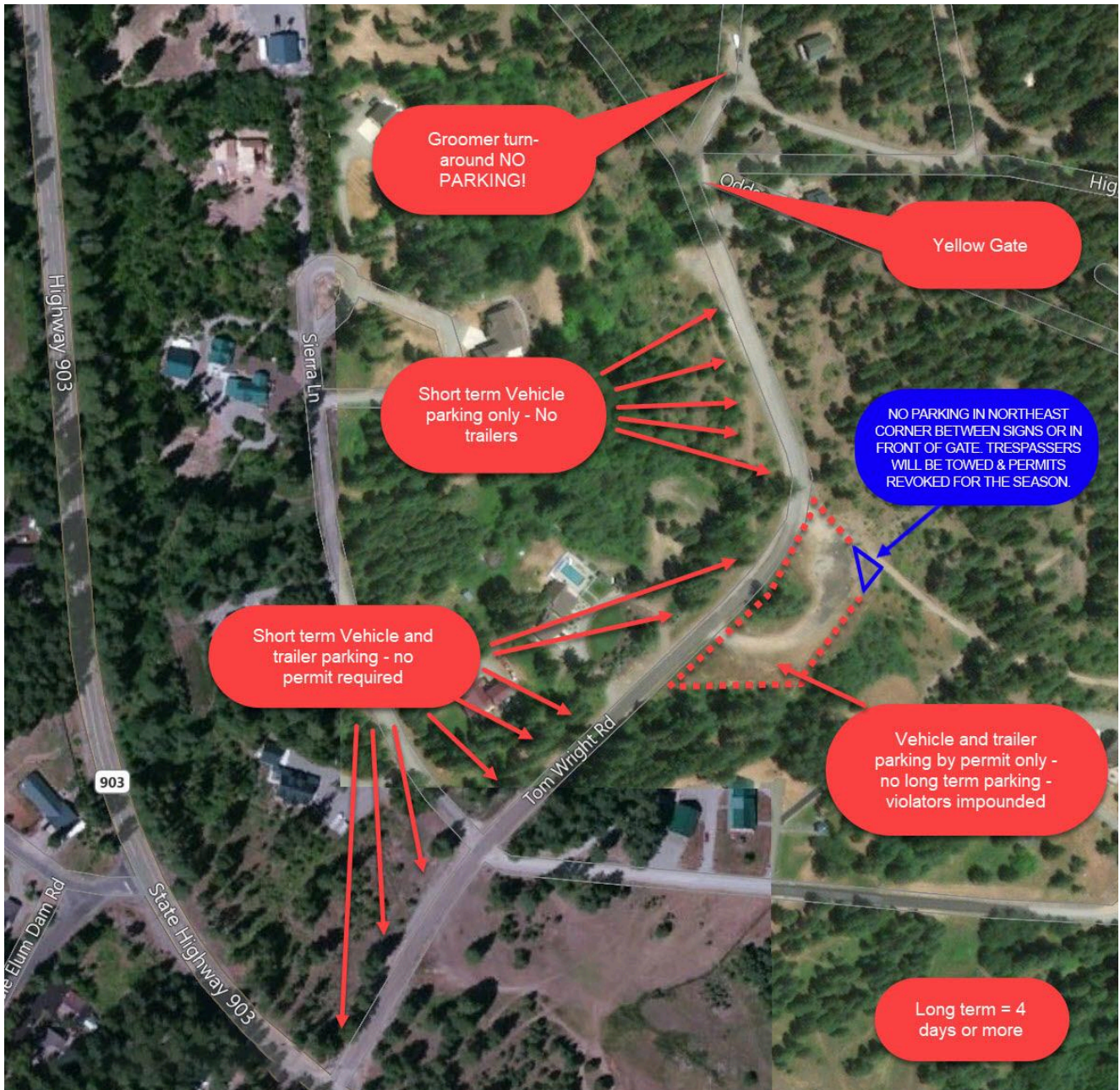
Rules have been enacted regarding parking on PLS property. **PLEASE READ CAREFULLY!**

- **DO NOT park between the "NO PARKING" signs in the northeast corner of the Tom Write parking lot.** This area is reserved for the owners of the parking lot. Vehicles parked there will be considered trespassing on private property and may be towed, both professionally and unprofessionally. PLS is not responsible for any damage caused to vehicles parked in this area.
- Please be considerate of others, especially when leaving. Parking trailers, snowmobiles, or side by sides in the areas that are plowed for vehicles only makes the parking situation worse.
- All vehicle parking on PLS property shall be by permit only.
- Members will be issued a vehicle parking permit that must be displayed by hanging from your rearview mirror. Each owner will be issued 1 parking permit for each lot owned. Members may obtain a guest pass at the lodge. No guest passes will be issued the week between Christmas and New Year's Day.
- No long-term (greater than 4 days) parking of trailers on PLS property.
- No long-term parking of snowmobiles, quads, UTV's, or other vehicles in the groomer turn around at the base of Tom Wright road (on the PLS side of the yellow gate).
- No parking of snowmobiles, Quads, UTV's, etcetera on the groomed roads (blocks groomer) • Long term parking of snowmobiles (greater than 4 days) is provided for members in the area between the manager's house and the clubhouse.
- No trailer parking in the middle triangle parking lot or in the lodge parking lot, single vehicles only.
- For safety reasons, tracks are preferred on all vehicles when the gates are closed.
- Once the gates are closed and grooming commences, "Tracked Vehicles Only" signs are posted and members are expected to comply.
- **Failure to follow these rules may result in your vehicle being towed at owner expense**

Also, please be respectful and limit the use of quads, Rangers, Kubotas or any UTV type vehicle when the roads are soft or freshly groomed. Many vehicles of this kind can create deep ruts and make the roads challenging for others.

In the winter months, please visit our website (<https://www.pinelochsun.org>) for gate closure, parking maps, and road information updates. Summary road information is also recorded on the clubhouse voice mail system.

TOM WRIGHT RD PARKING MAP



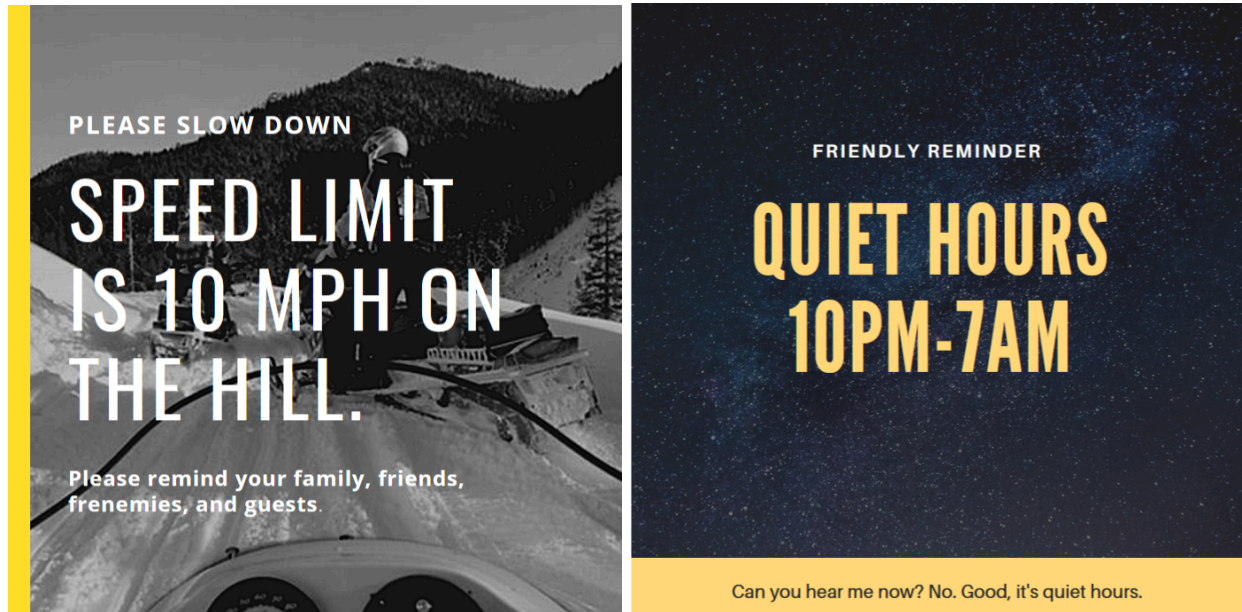
Thanks in advance for making the most of our shared parking areas during the winter season!
Pineloch Sun Beach Club POB 157 Ronald WA. 98940 Office: (509) 649-2850 Fax: (509) 649-2216 // pinelochsun@outlook.com

CLUBHOUSE PARKING MAP



Thanks in advance for making the most of our shared parking areas during the winter season!
PineLoch Sun Beach Club POB 157 Ronald WA. 98940 Office: (509) 649-2850 Fax: (509) 649-2216 // pinelochsun@outlook.com

FRIENDLY REMINDERS



Division III/Zone III Members:

We will begin plowing the roads as soon as conditions warrant. Usually when we get 6 inches or so. We do our best to minimize the berms left across driveways, but as the snow accumulates our choices of where snow is placed become limited. Please stay back from the snow removal equipment. We need room to work safely.

For any questions, comments, or concerns - please email our PLS staff pinelochsun@outlook.com and CC the board of directors at pinelochsunboardofdirectors@gmail.com.